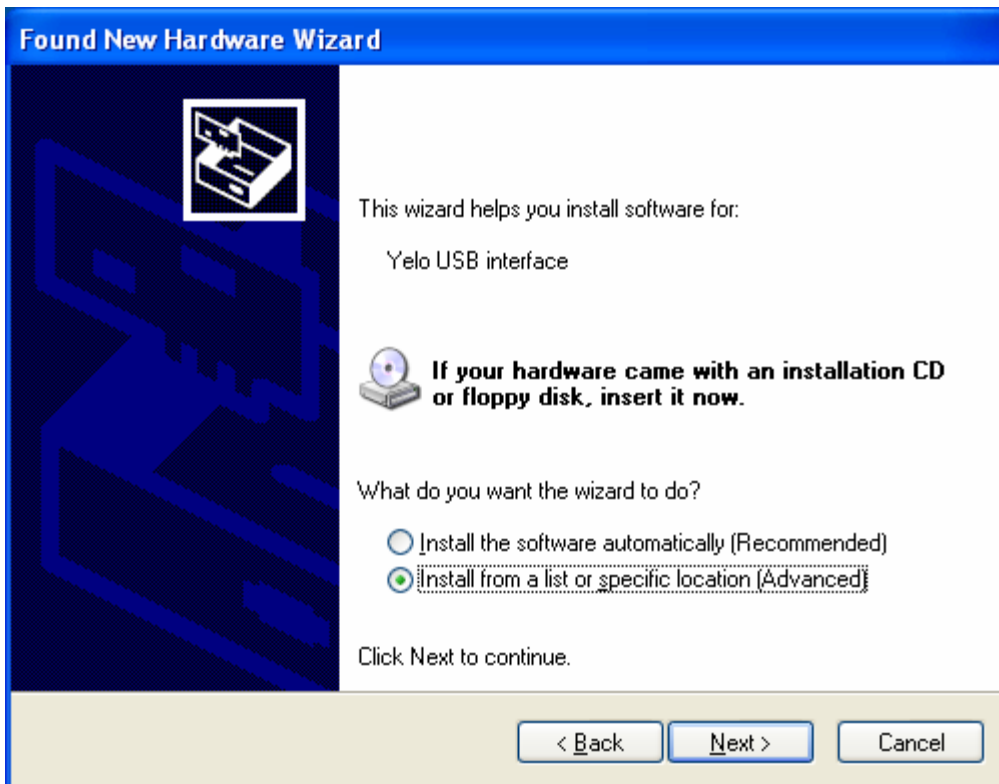


Installation instructions for Yelo USB interface

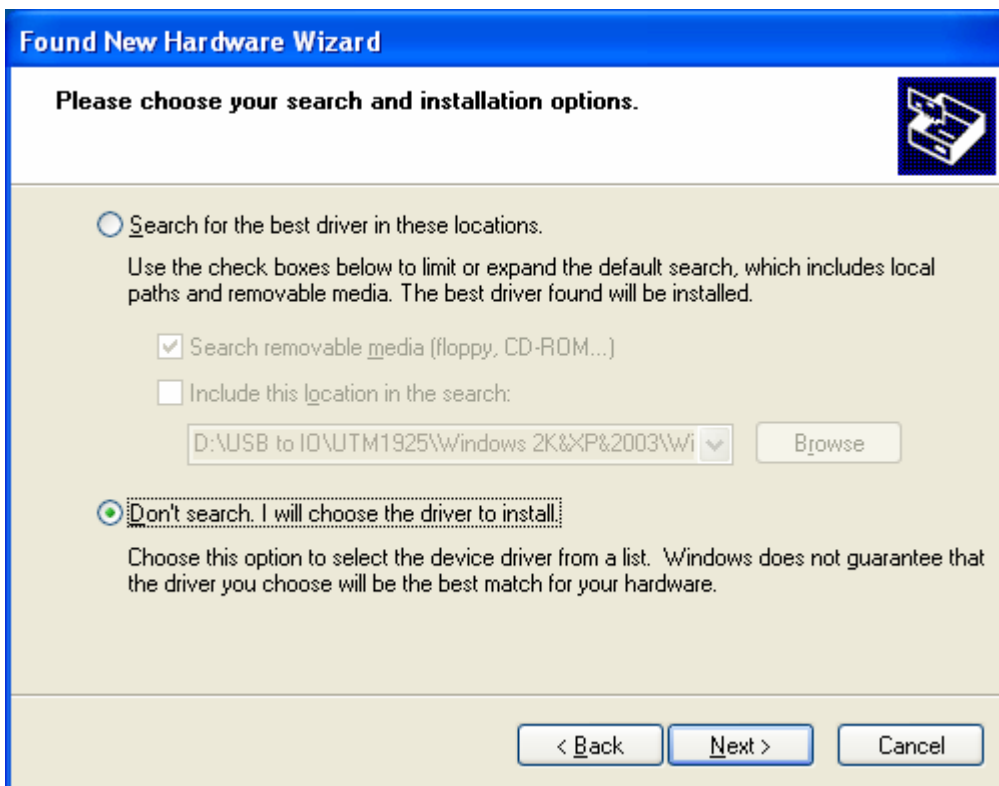
1. Ensure that YTE is not running.
2. Extract the contents of the ZIP file to a folder on the PC.
3. Run the Setup.bat file located in the extracted folder called Win XP-2000.
4. Connect the Yelo USB Interface to the computer.
5. The 'Found New Hardware Wizard' should appear. Please follow the steps indicated by the screenshots to complete the installation process.



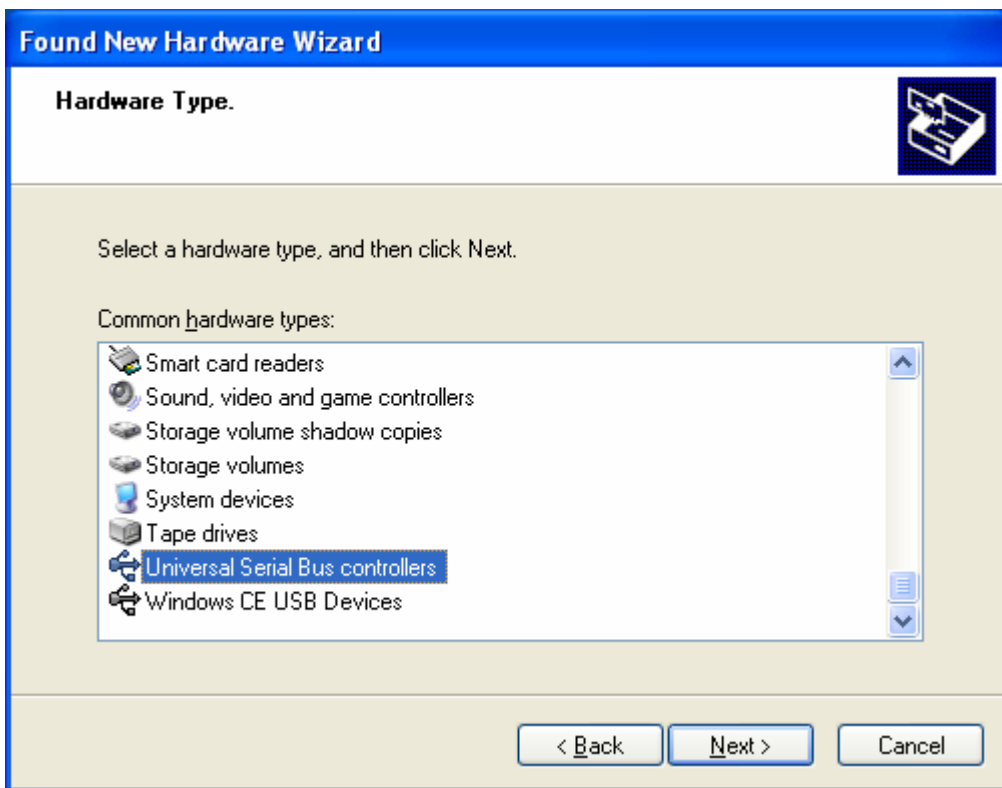
Click Next to continue.



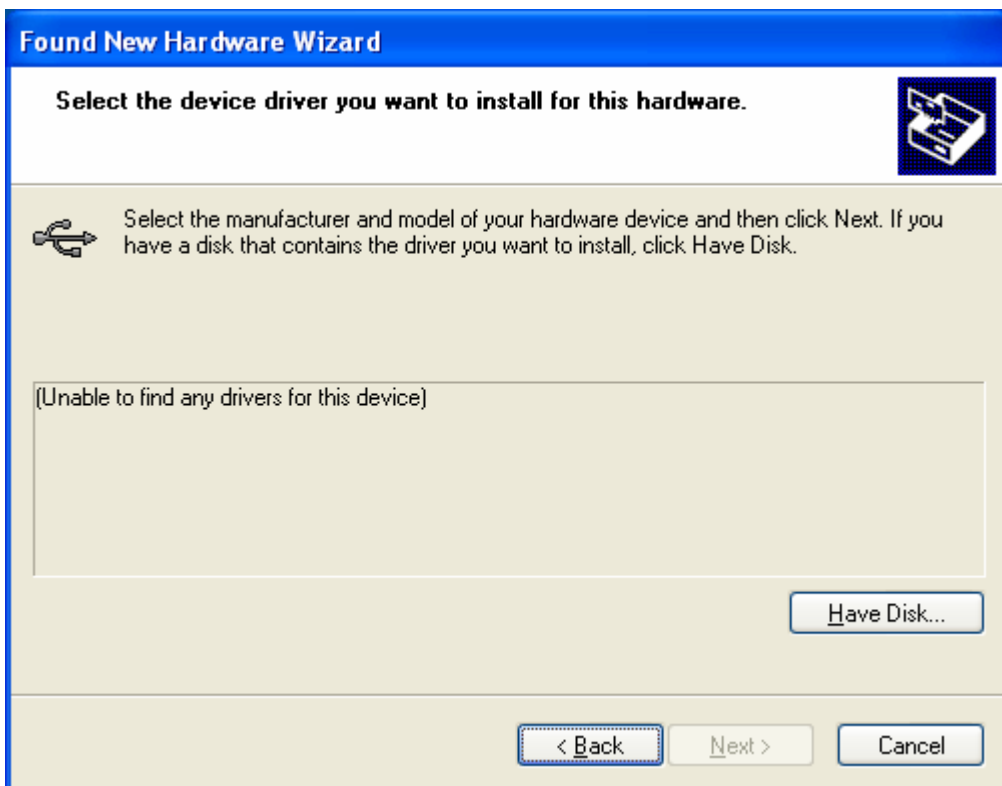
Click Next to continue.



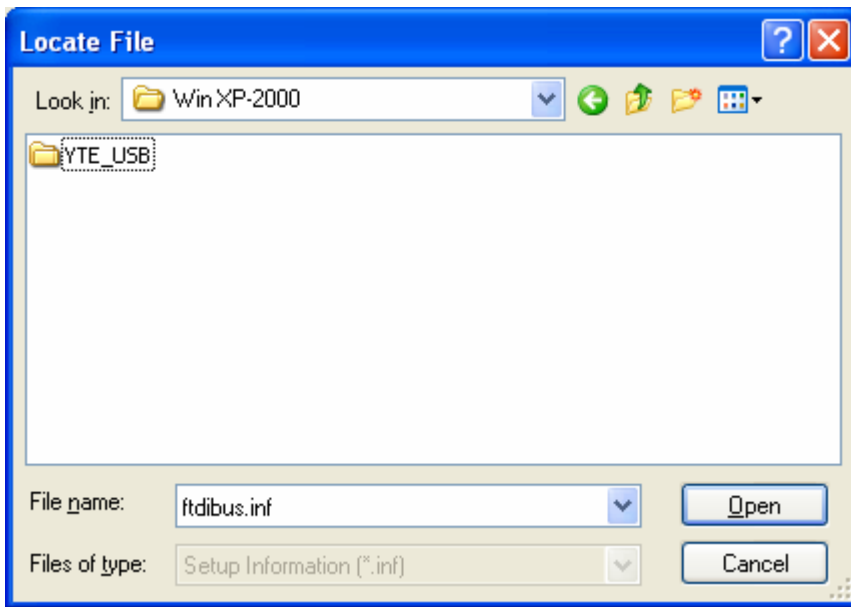
Click Next to continue.



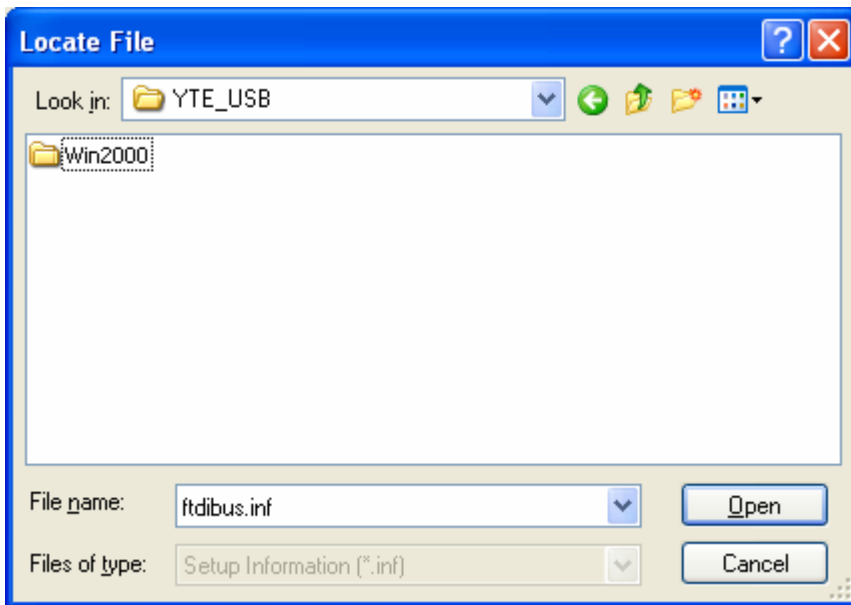
Click Next to continue.



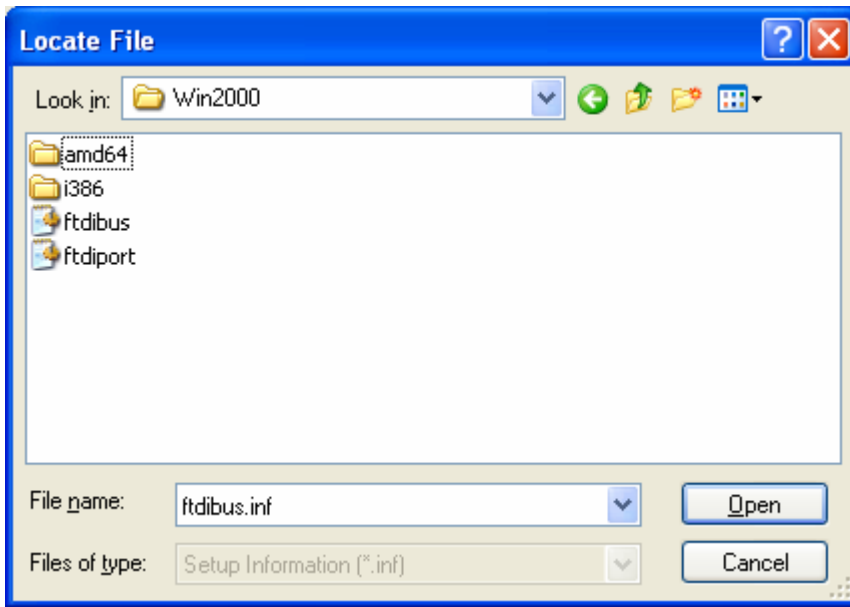
Click on 'Have Disk...' and browse to the Win XP-2000 folder.



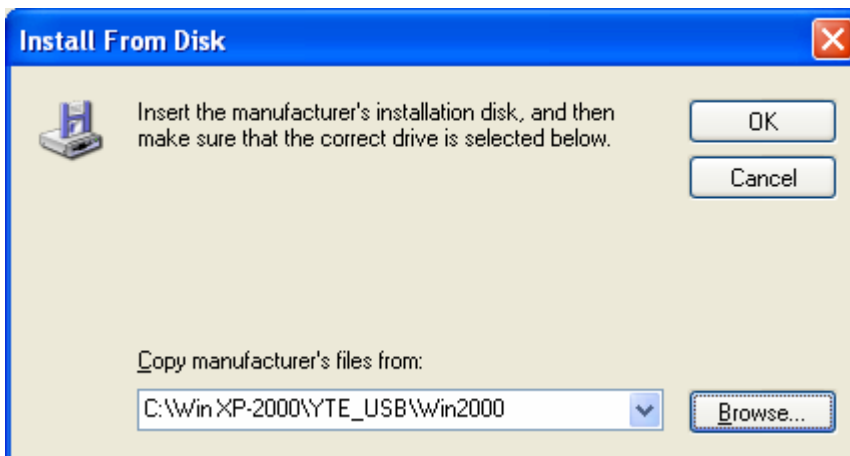
Browse to Win XP-2000.



Browse to Win XP-2000\YTE_USB.



Browse to Win XP-2000\YTE_USB\Win2000 and click on 'Open' to select the Yelo USB driver file.



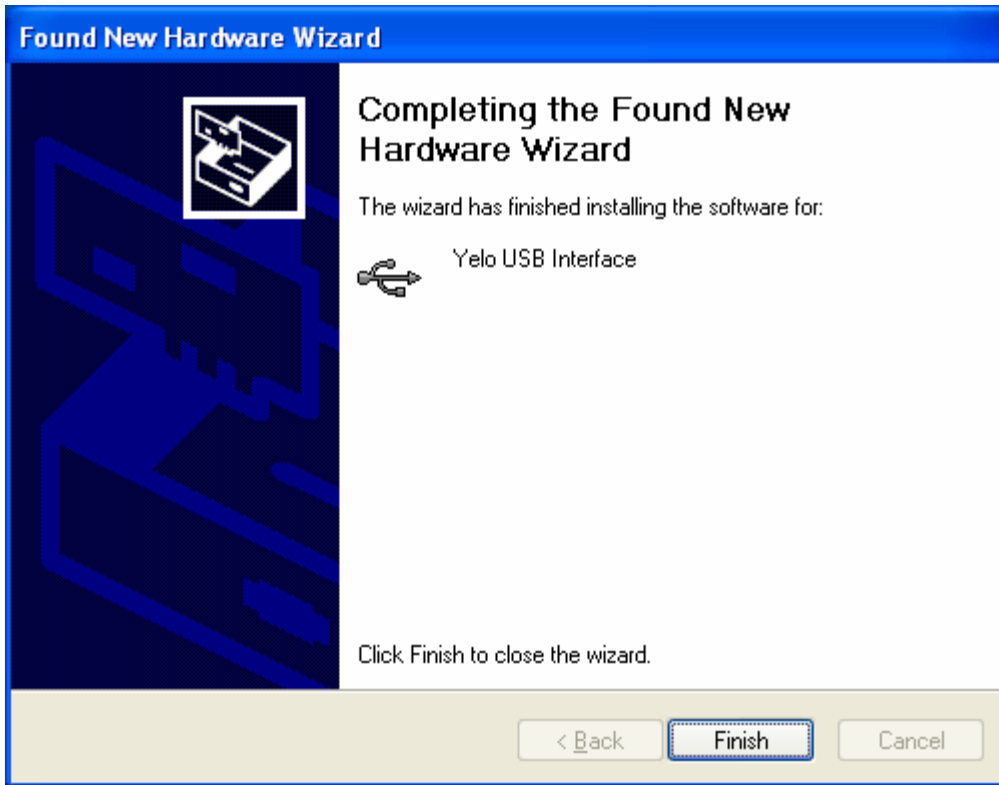
Click 'OK' to install the driver



Click 'Next' to continue

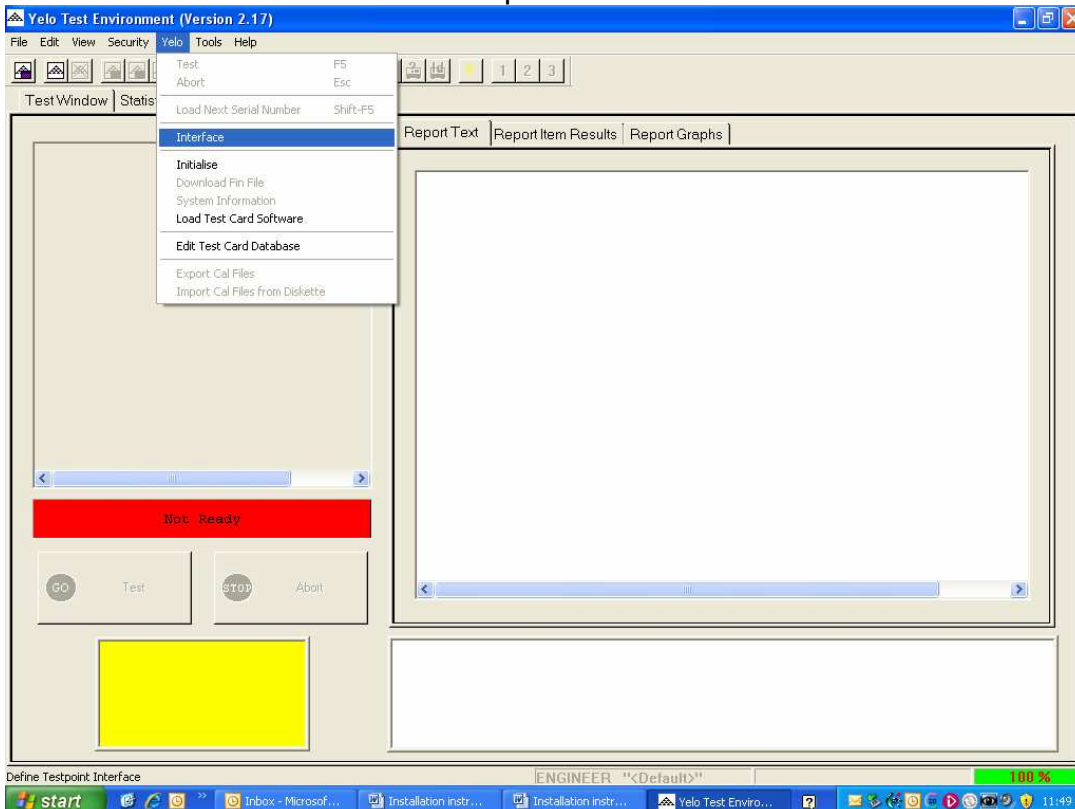


Click 'Continue Anyway'

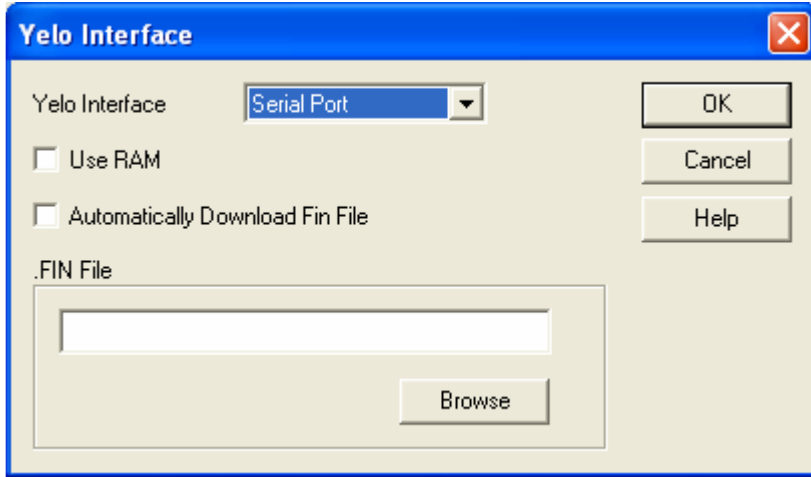


Click 'Finish' to close the wizard

Run YTE and select the Interface option via the Yelo menu



Finally select the Serial Port Interface option as shown below and click OK



It should now be possible to communicate with the Yelo tester through the USB connection.

From the Yelo menu, select Initialize, followed by Yelo → System Information.

A list of the Yelo system test cards will be displayed if the USB connection has been successfully established.